

Appendix J: LVS[®] 95XX
Factory Calibration Not Found

Copyright ©2016
Microscan Systems, Inc.
Tel: +1.425.226.5700 / 800.762.1149
Fax: +1.425.226.8250

All rights reserved. The information contained herein is proprietary and is provided solely for the purpose of allowing customers to operate and/or service Microscan manufactured equipment and is not to be released, reproduced, or used for any other purpose without written permission of Microscan.

Throughout this manual, trademarked names might be used. We state herein that we are using the names to the benefit of the trademark owner, with no intention of infringement.

GS1 Solution Partner



Disclaimer

The information and specifications described in this manual are subject to change without notice.

Latest Manual Version

For the latest version of this manual, see the Download Center on our web site at:
www.microscan.com.

Technical Support

For technical support, e-mail: helpdesk@microscan.com.

Warranty

For current warranty information, see: www.microscan.com/warranty.

Microscan Systems, Inc.

United States Corporate Headquarters
+1.425.226.5700 / 800.762.1149

United States Northeast Technology Center
+1.603.598.8400 / 800.468.9503

European Headquarters
+31.172.423360

Asia Pacific Headquarters
+65.6846.1214

Overview

Factory calibration settings must be restored if any of the following errors or error messages occur while operating the LVS-95XX software.

The steps in this document guide you through restoring factory calibration settings using the LVS-95XX installation media supplied with your system purchase. If you do not have the original LVS-95XX installation media, contact your local Microscan distributor or Microscan Technical Support for assistance:

helpdesk@microscan.com | +1.425.203.4841 | +1.800.762.1149

Errors and Error Messages

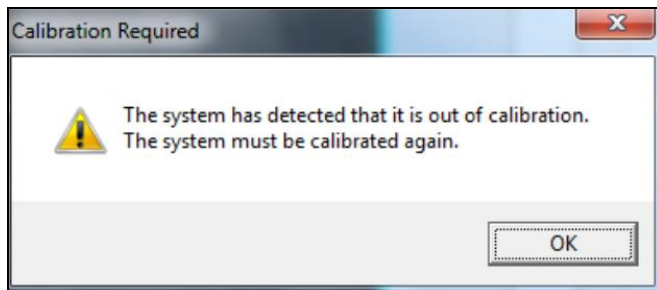
Error 1

Calibration label

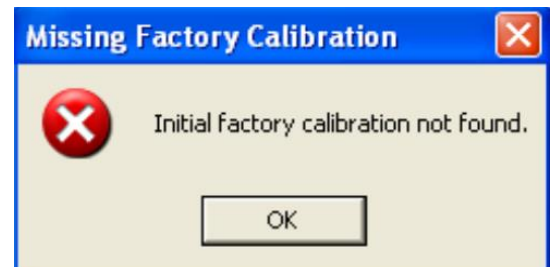
	Goal	Actual
Decodability	???	87
Contrast	???	67
Modulation	???	88
Rmax	???	71

Calibration Needed
Calibrate

Error 2



Error 3



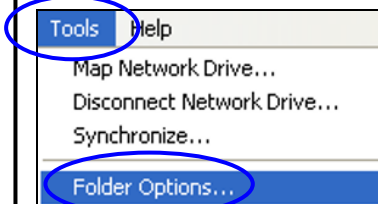
Follow the steps below if any of the above errors or error messages occur while operating the LVS-95XX software.

1. Upcoming steps in this document require you to identify certain folders, files, and file type extensions. To ensure all folders, files, and file type extensions are displayed on your computer, open Windows Explorer and follow step A below.

- A. Locate the operating system running the LVS-95XX software and follow the applicable steps.

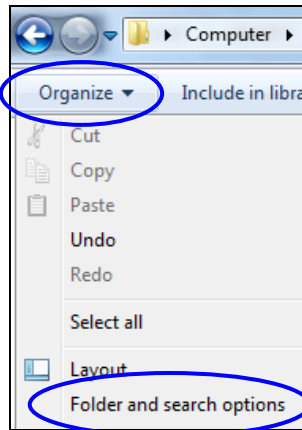
Windows® XP Steps:

In the menu bar, click **"Tools"** and then click **"Folder Options."** Proceed with Step B.



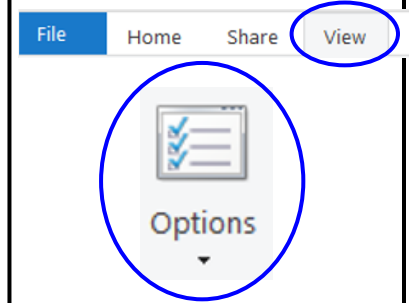
Windows® 7 Steps:

In the menu bar, click **"Organize"** and then click **"Folder and search options."** Proceed with Step B.



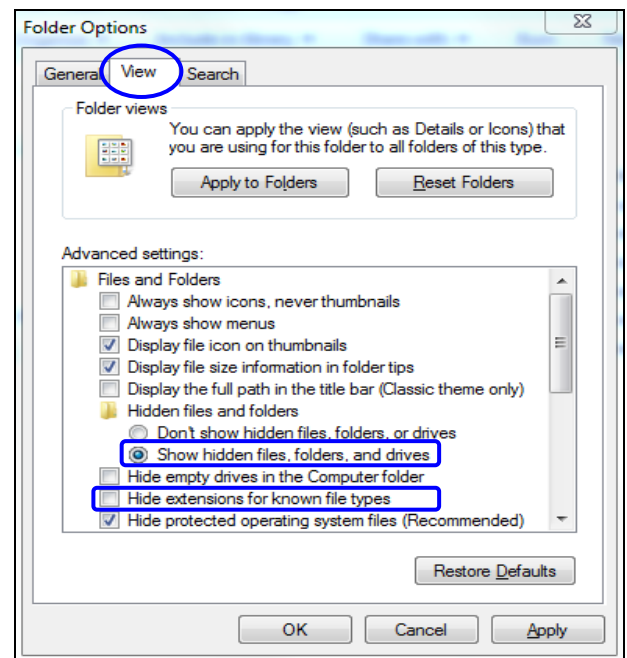
Windows® 8.1 Steps:

Click **"View"** in the menu bar, and then click **"Options."** Proceed with Step B.



- B. Click the **"View"** tab and:

- Select **"Show hidden files, folders, and drives."**
- Uncheck **"Hide extensions for known file types."**
- Click **"Ok."** All files, folders, drives, and file type extensions now appear in Windows Explorer.



- Log on to the LVS-95XX software. Click the “Archive” tab, and then click the “Change SQL connection” button.

ReportID	SectorID	LclTime	Reference	OverallGrade	De
494	1	22-Dec-2009 10:21		4.0/10/660 (A)	000
495	1	22-Dec-2009 10:21		4.0/10/660 (A)	000
496	1	22-Dec-2009 10:21		4.0/10/660 (A)	000
497	1	22-Dec-2009 10:25		4.0/10/660 (A)	000
498	1	22-Dec-2009 10:36		4.0/10/660 (A)	000
499	1	22-Dec-2009 10:47		2.7/06/660 (B)	012
500	1	22-Dec-2009 10:47		2.7/06/660 (B)	012
501	1	22-Dec-2009 10:47		2.7/06/660 (B)	012
502	1	22-Dec-2009 10:47		2.8/06/660 (B)	012
503	1	22-Dec-2009 10:48		2.8/06/660 (B)	012
504	1	22-Dec-2009 10:48		1.0/06/660 (D)	012
505	1	22-Dec-2009 10:48		2.7/06/660 (B)	012
506	1	22-Dec-2009 10:48		3.7/06/660 (A)	012
507	1	22-Dec-2009 10:48		3.7/06/660 (A)	012
508	1	22-Dec-2009 10:48		3.7/06/660 (A)	012
509	1	22-Dec-2009 10:48		3.7/06/660 (A)	012
510	1	29-Dec-2009 11:08		4.0/06/660 (A)	012
511	1	29-Dec-2009 11:08		4.0/06/660 (A)	012

- Make a note of the “Data Source” path; you will access this path in an upcoming step.

Setup Connection to SQL Database

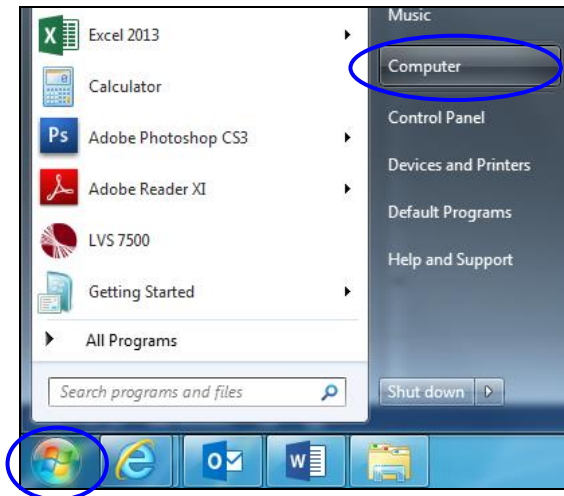
ODBC connection string:

```

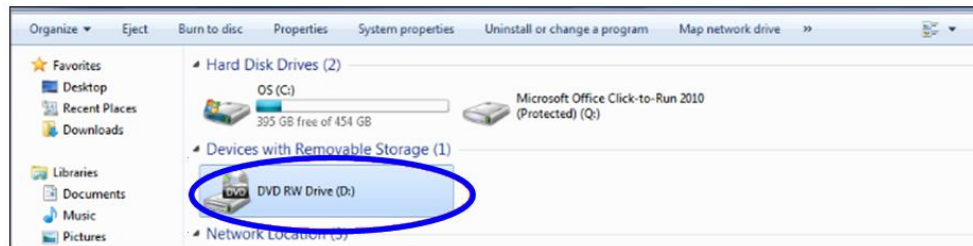
Provider=Microsoft.Jet.OLEDB.4.0;
User ID=Admin;
Data Source=C:\ProgramData\I9500\I9500.mdb;
Mode=ReadWrite;
Jet OLEDB:System database='';
Jet OLEDB:Registry Path='';
    
```

- Close the LVS-95XX software and make sure all other computer programs and windows are closed.
- Insert the LVS-95XX installation media supplied with your system into your computer.

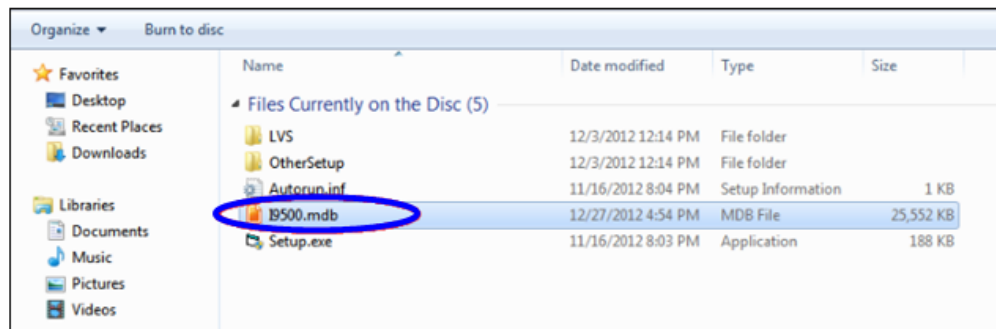
6. Click the “Start” button located in the bottom, left corner of the screen, and then click “Computer.”



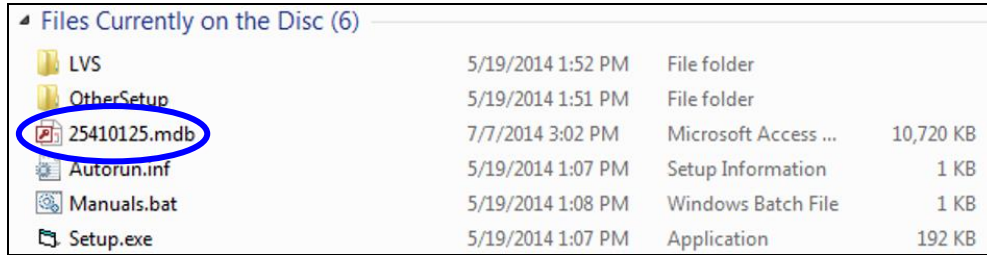
7. Double-click the CD-ROM drive (usually the D:\ drive).



8. Follow one of the steps below depending on your LVS-95XX software version. The software version is located on the cover of the installation media and on the “Welcome” tab.
- If using LVS-95XX software version **3.0.91 or earlier**, right-click on the “I9500.mdb” file and select “Copy.”



- If using LVS-95XX software version **3.0.9J or later**, right-click on the 8-digit numerical .mdb file and select “Copy.”

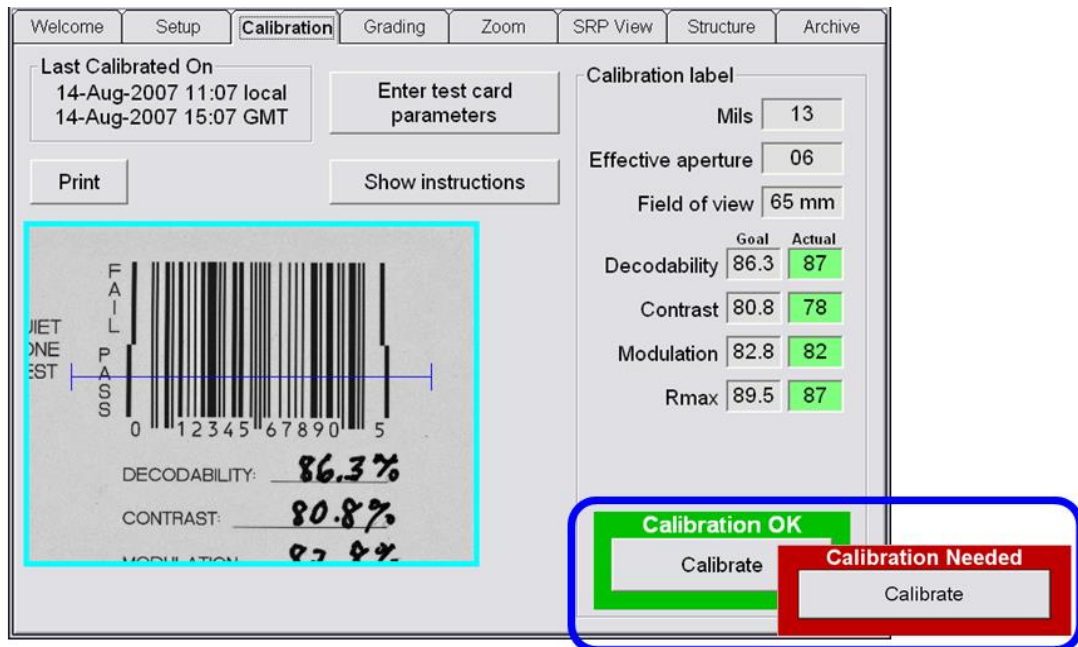


- Click on the C:\ drive and navigate to the path noted in step 3. Example: C:\Users\Public\I9500. Paths differ based on the type of operating system.
- Right-click on the screen and select “Paste.” The .mdb file (I9500.mdb or 8-digit numerical .mdb, depending on your LVS-95XX software version) is pasted in the folder.
- If the 8-digit numerical .mdb is pasted into the folder, rename the file to **I9500.mdb**.
- Log on to the LVS-95XX software. Verify that the software calibrates correctly by clicking the “**Calibration**” tab. Place either of the Master Grade barcodes (located on the supplied Calibrated Conformance Standard Test Card) into the center of the field of view, ensuring that the blue line passes through the “PASS” portion of the calibration label. Click “**Calibrate**.”

Successful calibration is indicated by a green “Calibration OK” message in the bottom, right corner of the screen (see example image below). Proceed with step 13.

Failed calibration is indicated by a red “Calibration Needed” message. If calibration fails, contact your local Microscan distributor or Microscan Technical Support:

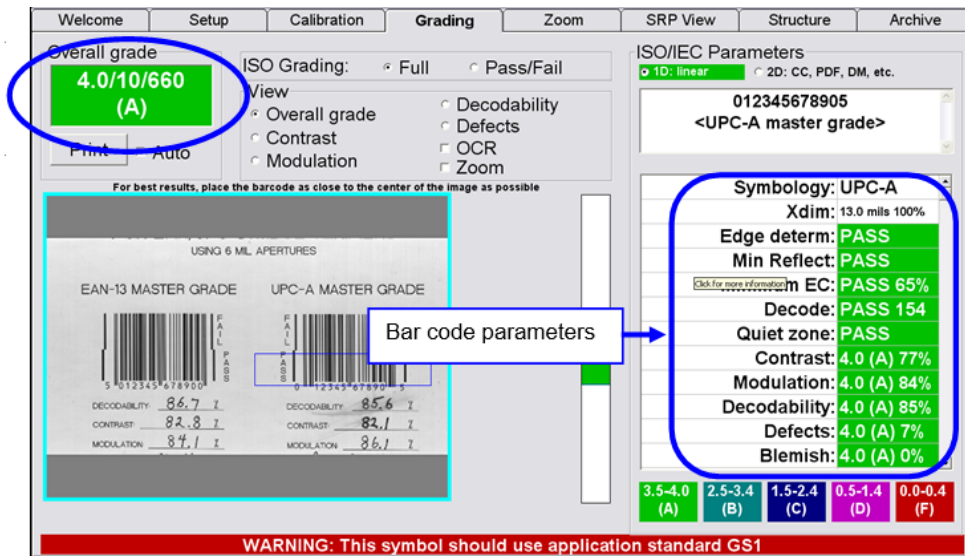
helpdesk@microscan.com +1.425.203.4841 +1.800.762.1149



13. Verify that the software grades correctly by following the steps below:

- With the Calibrated Conformance Standard Test Card in the field of view, click the “**Grading**” tab.
- Grade the barcode image by drawing a box around the PASS portion of the barcode, ensuring enough space for the quiet zone.
- Verify that the “Overall grade” and barcode parameters are shaded green (indicating a passing grade); this is an indication that grading works correctly.

Note: Refer to the “Grading tab” section in the “LVS-95XX Series Barcode Quality Station Operations Manual” (electronic copy located on the installation media) for detailed steps on grading barcodes.



14. If any of the above steps fail to work correctly, contact your local Microscan distributor or Microscan Technical Support:

helpdesk@microscan.com | +1.425.203.4841 | +1.800.762.1149